



THE
BALANCE

BY THE BEACH



THE BALANCE

BY THE BEACH

MAKE EACH RHYTHM OF LIFE
FLOW SMOOTHLY AND PEACEFULLY.





Project Name : The Balance By the Beach
Company Name : The Beach Resort Company Limited
Segment : Luxury Class
Address : 98/88 - 98/89 Kata road, Karon, Mueng, Phuket, Thailand
Land Area : 1-3-16.8 Rais
Number of Buildings : 2 Buildings
Number of Units : Total 112 Units
Parking Lots : 39 Cars + 11 Motorbikes

Type of Accommodation :

1 bedroom duplex		49.5 Sq.m.
1 bedroom		37.98 Sq.m.
1 bedroom XL		56 Sq.m.
1 bedroom XL plus		57 Sq.m.
2 bedroom		74 Sq.m.
2 bedroom plus		76 Sq.m.

Facilities : Swimming Pool, Kids pool, Onsen, Yoga Area, Pet Garden, Supports Home Automation, Gym, Co-working Space, BBQ Area, Library



THE BALANCE

BY THE BEACH

Convey the inspiration of balance through meticulous vertical design architecture in Modern & Contemporary Style.

Ready to connect with nature and satisfy its varying needs at every stage of life.

BECAUSE YOUR 'LIFE' REQUIRES 'BALANCE' IN ALL ASPECTS.





INSPIRED BY THE '4 ASPECTS'
OF LIFE BALANCE.

**RESIDENCE
VACATION
WELLNESS AND
RELATIONSHIPS...**





FACILITIES



PET FRIENDLY



PET GARDEN



GARDEN



POOL



CO-WORKING SPACE



FITNESS



LOBBY



ROOFTOP



ONSEN



YOGA SPACE



LIBRARY



BBQ ZONE





RELAX WHILE ENJOYING A LUXURIOUS
SWIMMING POOL

Escape to a world of serenity and rejuvenation
in the tranquil oasis of our breathtaking pool.





NATURAL SCENE LIVING SPACE

Take a leisurely walk through the lush greenery and soak in the beauty of nature around you. Let the serene atmosphere of our garden soothe your mind and relax your body.



A LUXURIOUS, MODERN, CO-WORKING SPACE

Experience the perfect work-life balance in our state-of-the-art co-working facility with an area of over 80 sq.m. Enjoy the flexible workspaces and modern amenities that cater to your unique business needs, may it be for meeting or other work activities.

A FULL-FUNCTION FITNESS CENTRE

Elevate your fitness routine to achieve your goals of a healthy and active lifestyle in our vibrant fitness centre.



A SPACIOUS LOBBY

Our lobby is more than just a welcoming space - it's a reflection of our commitment to promoting life balance and celebrating the unique identity of The Balance Condominium.

*The image is just for advertising

OUTDOOR YOGA

Enhance your self-care routine in our tranquil and private garden area, designed specifically for yoga and meditation. Enjoy a natural and serene environment that helps you balance both body and mind, and provides a perfect space to connect with your self.



ROOFTOP GARDEN

Our Rooftop Garden, set amidst a serene and cool atmosphere, is perfect for relaxation, mental rejuvenation, and enjoying the beautiful views of Kata Beach. But beyond its calming ambiance, the Rooftop Garden offers even more.

The image is just for advertising

LOCATION

THE PROPERTY IS ADJACENT TO A TOURIST DESTINATION. IN THE MIDST OF CHARMING NATURE.



KATA BEACH

5 MINS AWAY



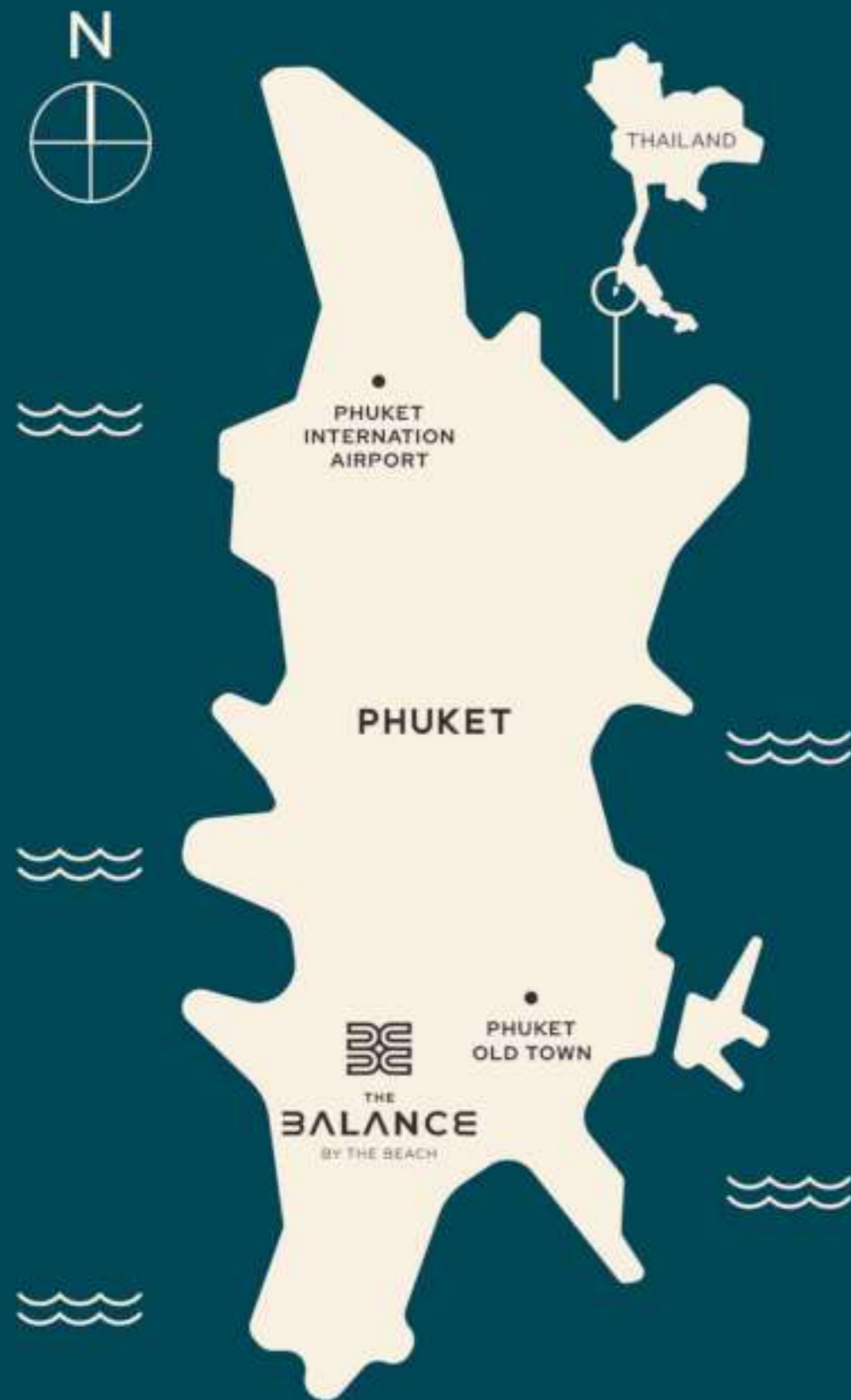
BIG BUDDHA

7.8KM



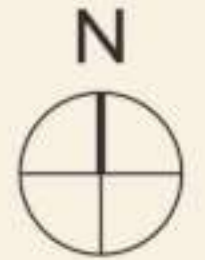
PHUKET OLD TOWN

14.9 KM



Google Maps





MAE SOMJIT MARKET



BE
 THE
BALANCE
 BY THE BEACH

THE BEACH CENTER
 TOWN HOME

- THE BEACH PLAZA
- SHOP PLAZA
- WELLNESS
- MARKET
- RESORT
- OTHER

300 M. FROM THE BALANCE CONDO

WALKING STREET

TO KARON BECH

KATA BEACH

KATA ROAD

CLUBMED

SURF DAY
 KATA BEACH

THE BEACH
 PLAZA

THE GRAND
 KATA NIGHT PLAZA

WELLNESS

SEAFOOD
 MARKET

KATA NIGHT
 PLAZA

SHOP
 HOUSE

SHOP HOUSE

THE BEACH
 RESORT

SHOP HOUSE

THE BEACH CENTER
 TOWN HOME

THE BEACH PLAZA

SHOP PLAZA

WELLNESS

MARKET

RESORT

OTHER

300 M. FROM THE BALANCE CONDO

WALKING STREET

DUPLEX ROOM

49.5 SQ.M.



1ST FLOOR

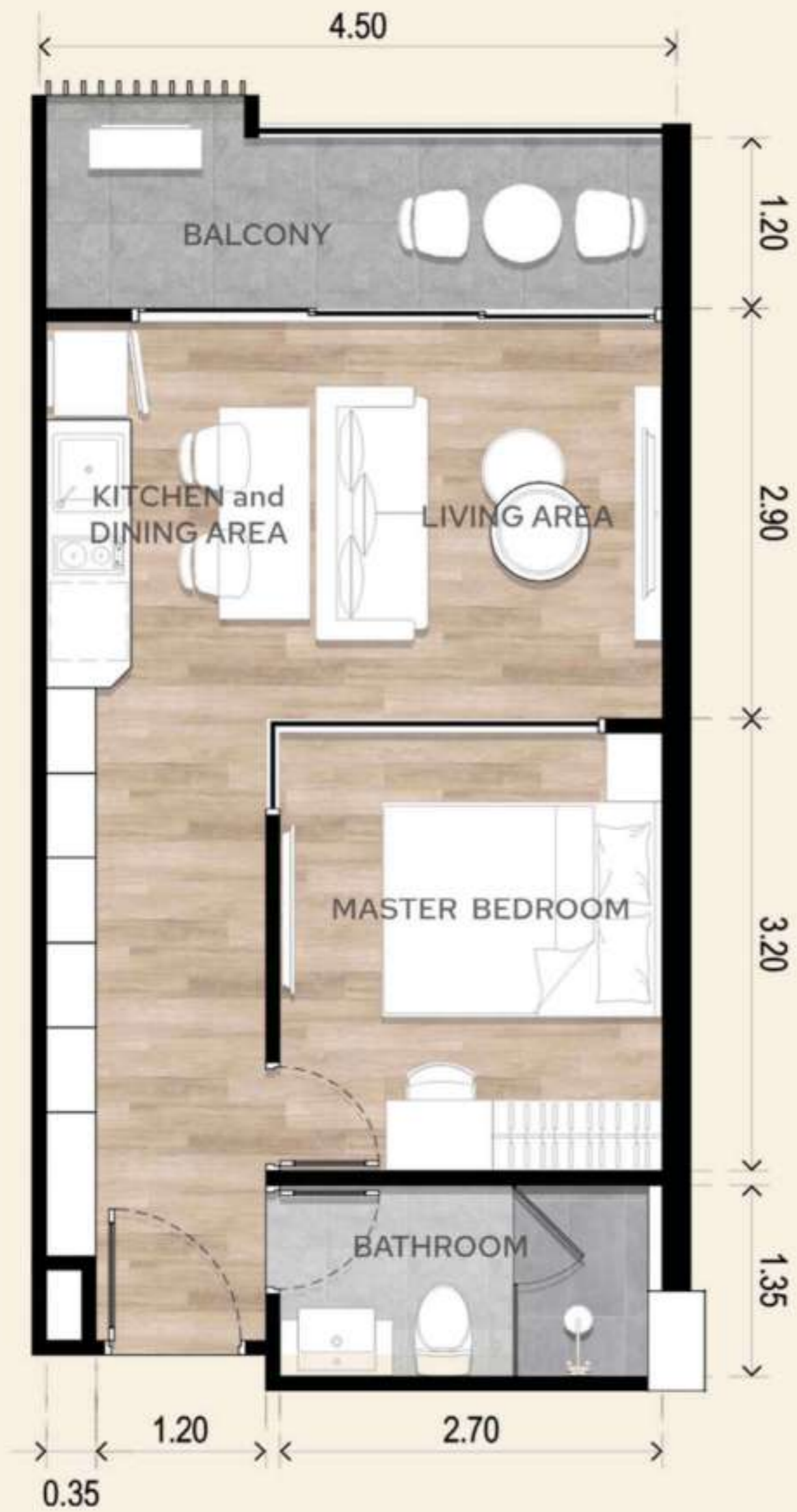
2ND FLOOR





ONE BEDROOM

37.98 SQ.M.





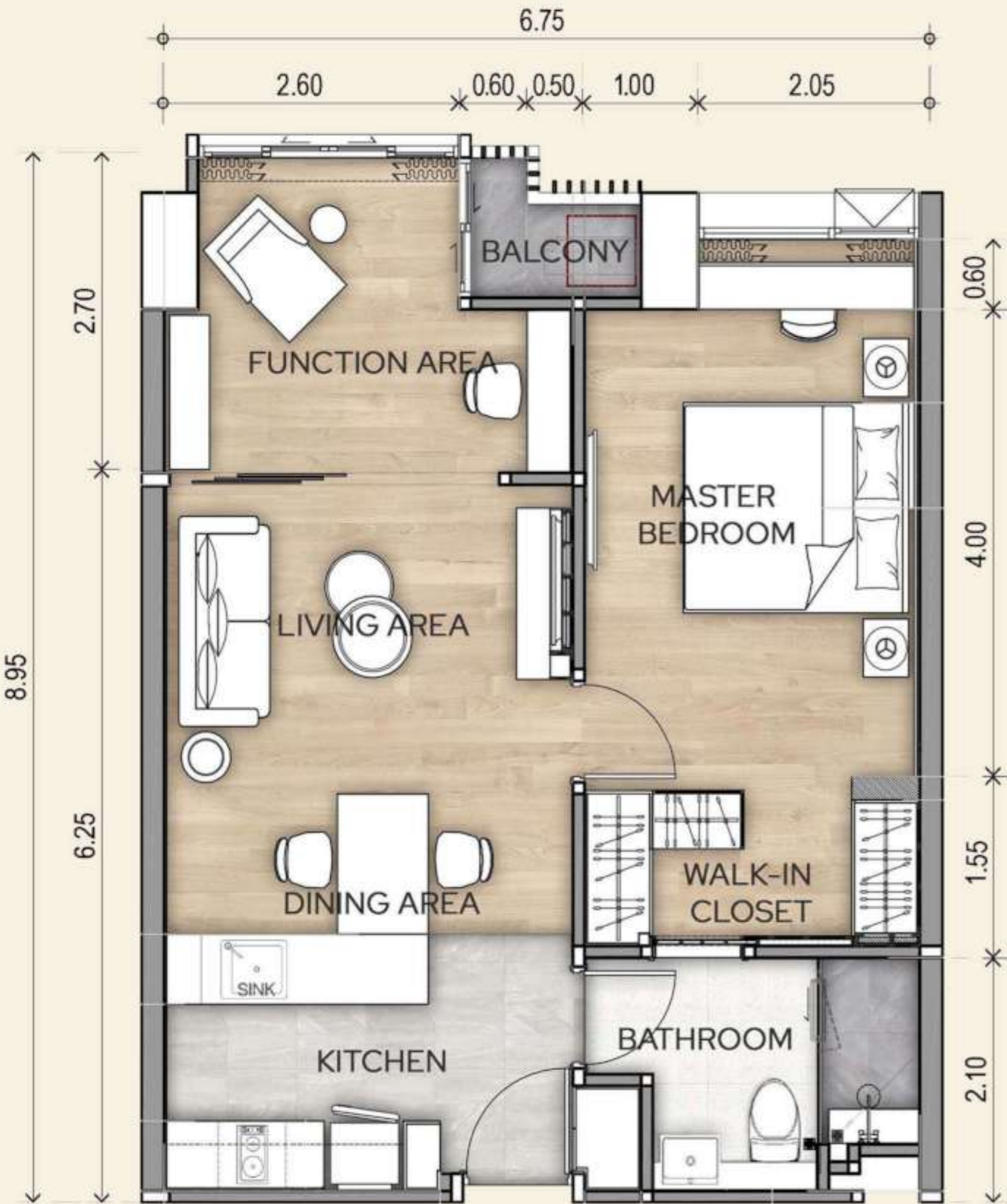
ONE BEDROOM XL

56 SQ.M.



ONE BEDROOM XL PLUS +

57 SQ.M.

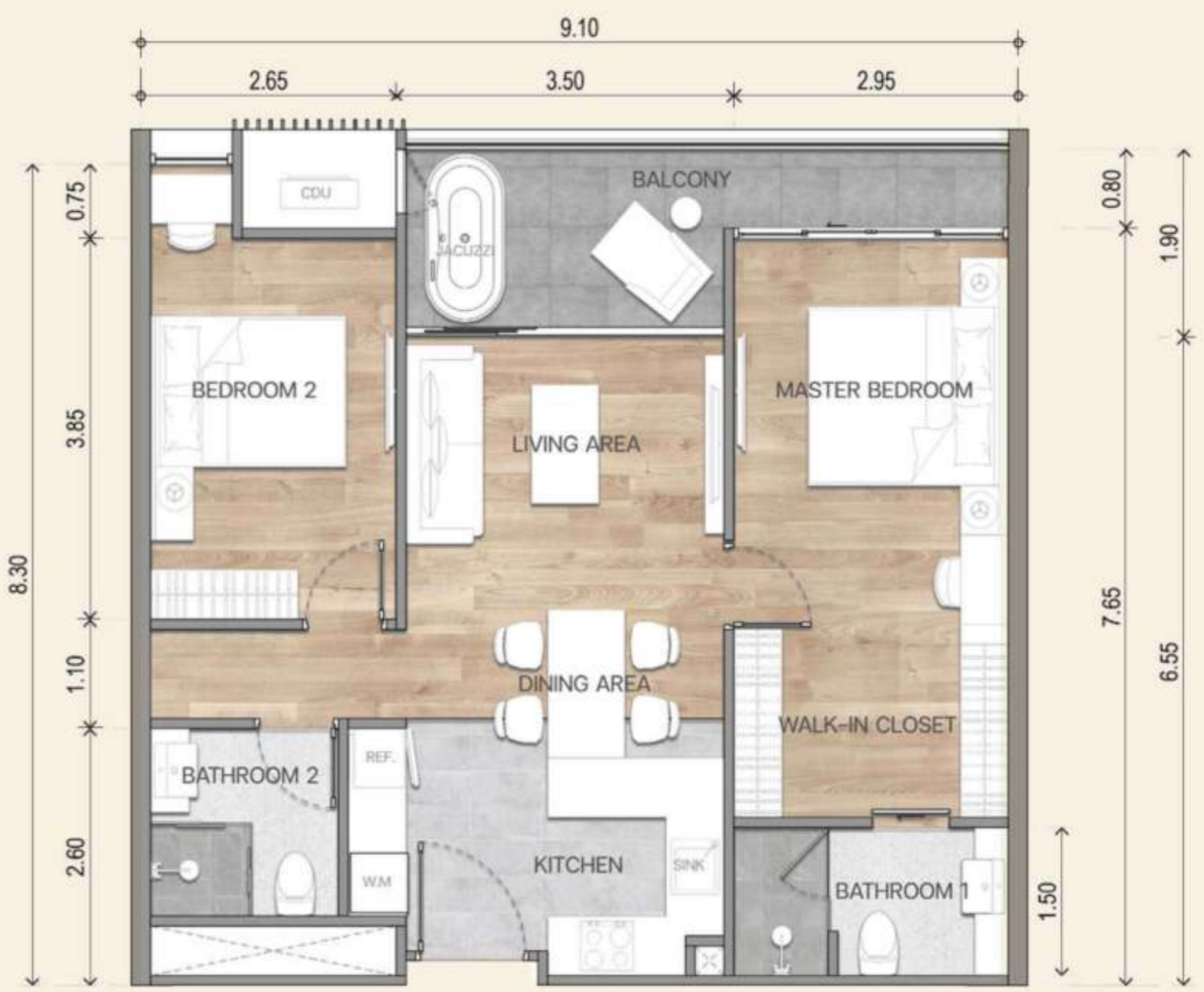




TWO BEDROOM

74 SQ.M.

-  2 BEDROOM
-  LIVING ROOM
-  KITCHEN
-  DINING TABLE
-  2 BATHROOM
-  BATHTUB



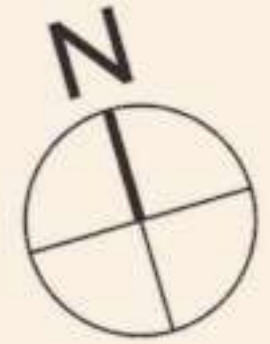
TWO BEDROOM PLUS+

76 SQ.M.



FLOOR PLAN

BASEMENT FLOOR



FLOOR PLAN

1ST FLOOR

DUPLEX & FACILITIES



FLOOR PLAN

2ND FLOOR

- 1 BEDROOM
- 1 BEDROOM XL
- 1 BEDROOM XL+
- 2 BEDROOM



FLOOR PLAN

3RD FLOOR

- 1 BEDROOM
- 1 BEDROOM XL+
- 2 BEDROOM



FLOOR PLAN

4TH FLOOR

- 1 BEDROOM
- 1 BEDROOM XL
- 1 BEDROOM XL+
- 2 BEDROOM+



FLOOR PLAN

5TH FLOOR

- 1 BEDROOM
- 1 BEDROOM XL
- 1 BEDROOM XL+
- 2 BEDROOM



FLOOR PLAN

6TH FLOOR

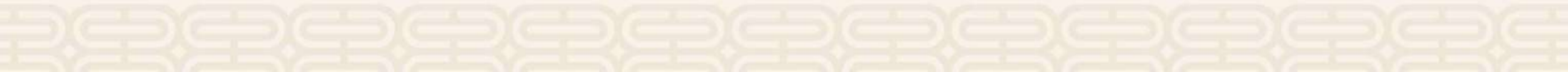
- 1 BEDROOM
- 1 BEDROOM XL
- 1 BEDROOM XL+
- 2 BEDROOM+



FLOOR PLAN

7TH FLOOR

- 1 BEDROOM
- 1 BEDROOM XL
- 1 BEDROOM XL+
- 2 BEDROOM+



FLOOR PLAN

ROOFTOP





KARN PRACHUMPAN

Date of birth : 16th November 1968

Nationality : Thai

Domicile : Phuket Province

Educational Qualification :

Diploma of marketing and communication,
Lopburi commercial college of technical.

CURRENT POSITION :

CEO of the Beach Group Co., Ltd.

CEO of K.W. Development Co., Ltd.

CEO of Andaman City Development Co., Ltd.

SOCIAL POSITION :

- Deputy Director for the Andaman International Health Center, PSU Phuket Campus.
- Advisor to the senate sub-committee on marine tourism.
- Advisor to the Tourism Industry Council of Thailand.
- Secretary-general of the Andaman & Thai Gulf Wellness Hotel Association.
- Vice President of Thai Charter.
- Foundation vice President of foundation of Kata-Karon development.
- President of the Audit and Monitoring Committees of Police Administration at Karon Police Station.
- Honorary Advisor of Karon Municipality



THE BEACH
CONDOTEL



THE BLOC





BEAR PACKER
PATONG HOTEL



SURF HOUSE
PATONG BEACH





**HOTEL CLOVER
PATONG**

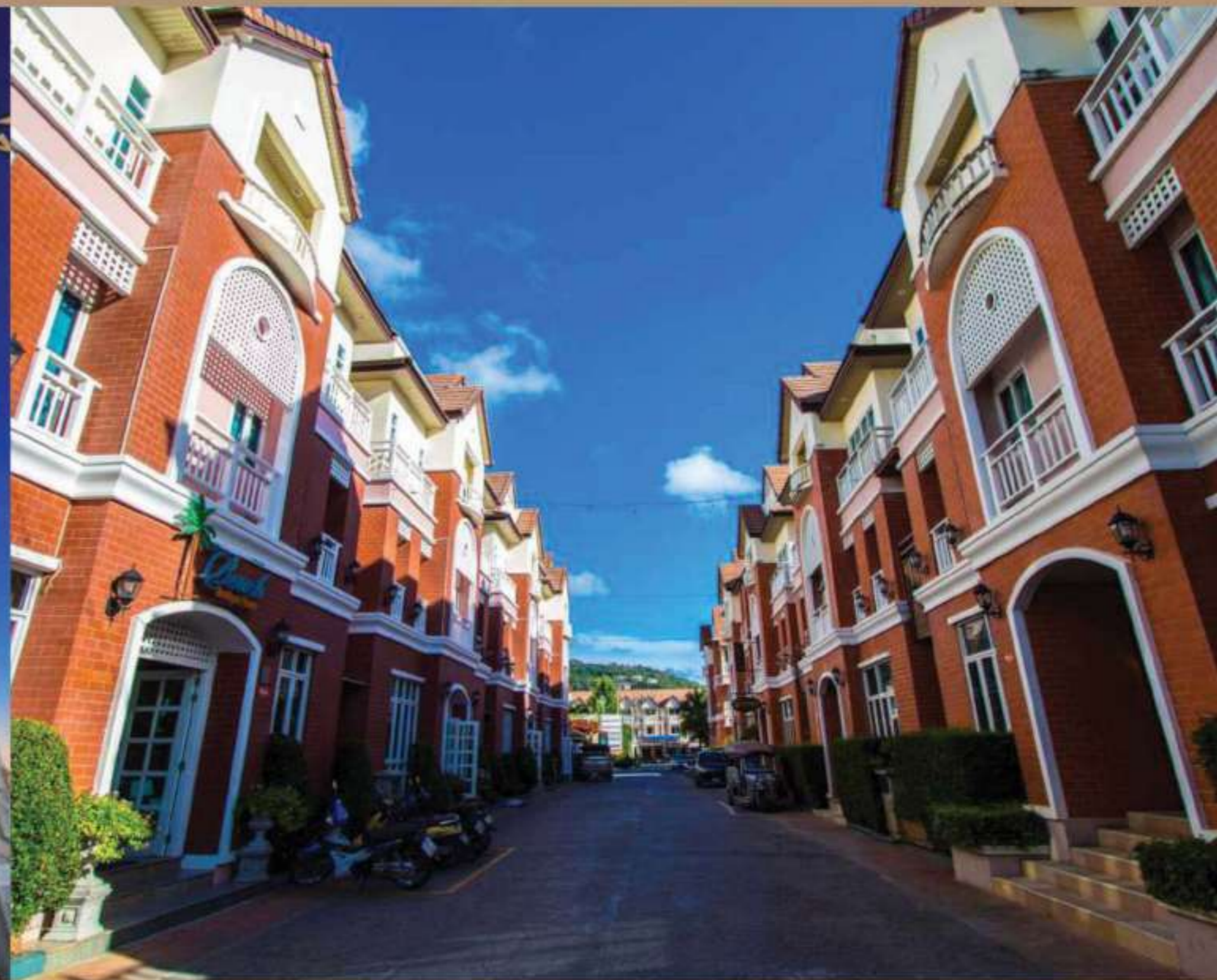


**THE BEACH CENTER
TOWN HOME**





**ARYA BEACH
HOTEL**



**THE BEACH
BOUTIQUE HOUSE**

